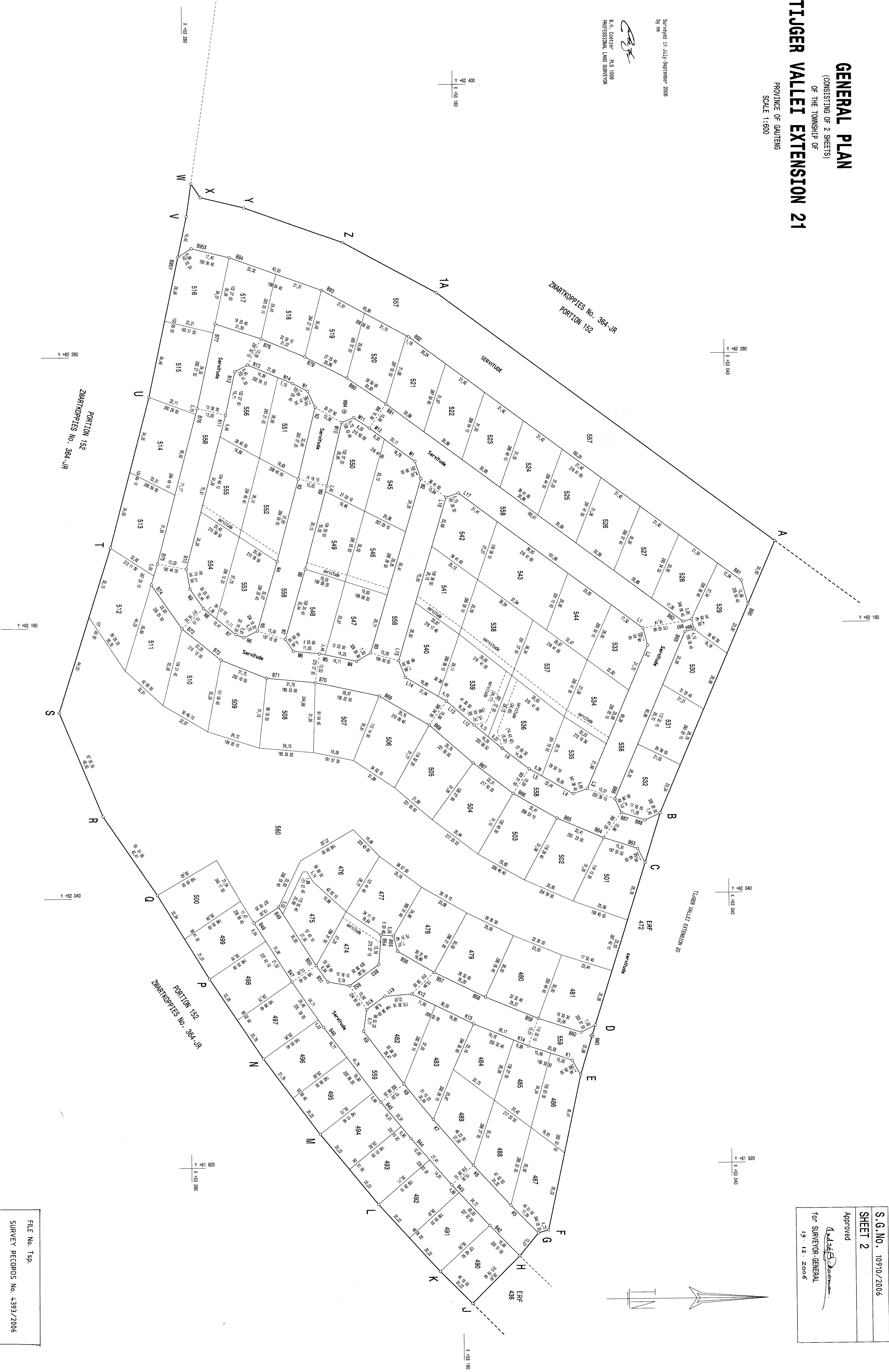


GENERAL PLAN
 (CONSISTING OF 2 SHEETS)
 OF THE TOWNSHIP OF
TIGGER VALLEI EXTENSION 21
 PROVINCE OF GAUTENG
 SCALE 1:300

Surveyed in July-September 2006
 by me

[Signature]
 M.H. COETZER R.S. 3038
 PROFESSIONAL LAND SURVEYOR



S.G. No. 10910/2006
 SHEET 2
 Approved
[Signature]
 for SURVEYOR-GENERAL
 19.12.2006

FILE No. Tsp.
 SURVEY RECORDS No. 4393/2006
 COMPILATION JRSM-44
 DEEDS, PRETORIA